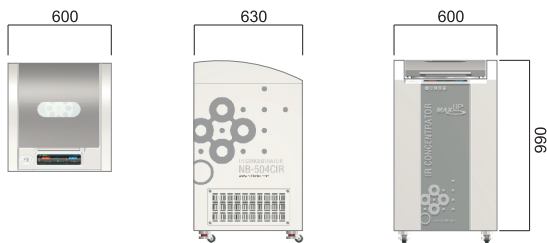


MAX-UP (NB-504CIR)

IR CONCENTRATOR is high efficient concentration equipment to study micro-protein or molecular structure, extracted DNA or RNA.

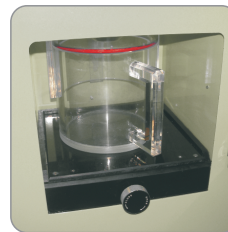
The required samples are extracted by concentrating DNA or RNA, Amino acids, Hormones, Enzymes, Protein in a short time by using vacuum pump and far InfraRed ray.



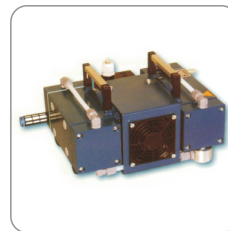
Vacuum port is on the center of rotor to make contamination to be minimized.



IR-emitting<InfraRed> glass lid shortens the time of concentration.



Cold trap chamber <-40°C, 2liters>



Chemical-proof Diaphragm vacuum pump is built in the equipment.

Accessories * The detail on accessories is written at the end of section.

RO-96 WELL	RO-1.5/132	RO-15/12	RO-50/08	RO-250/04	

Features

- IR-emitting Plate Glass lid (Patent No.10-0616063)**
 With the use of infrared ray, the sample can be concentrated efficiently in a vacuumed chamber in a short time. The special IR glass lid protect liquid sample having high boiling point from condensation.
- Designed for heat-sensitive sample**
 It is available for the wide range of heat sensitive materials such as proteins and natural substances.
- Two-point Temperature Sensors**
 Two of temperature sensors of chamber and bucket provide efficient concentration.
- Detector to check unbalance of rotor**
 The detector checks the unbalance of rotor caused by the different quantities of remaining samples during concentrating. The function ensures the environment of experiment is in a safety.
- Pre-heating mode**
 Pre-heating function allows to shorten experiment time by the temperature in chamber can be reached to the setting point ahead of running.
- No cross-contamination, No sample loss**
 The contamination and sample loss is minimized because the exhalation hole for the vacuum is located on the center of the shaft.
- Compact & Mobile System**
 Chemical free diaphragm vacuum pump and Cold trap is built-in the equipment. It's suitable for individual researchers with limited space.



Specification

Items	Unit	MAX-UP (NB-504CIR)
Temperature range	℃	+4℃ to 80℃
control		Microprocessor digital PID
increment	℃	0.1℃
standby		Pre-heat
Operating panel		Touch button
Heating mode		Selectable 3 mode IR / IR & Heat / Heat
Display		5 digit LED
Capacity	ml,ea	1.5ml micro-tube x 132ea 15ml tube x 12ea, 50ml tube x 8ea, 250ml tube x 4ea 96 well micro-titer plate x 2ea
Speed range	rpm	Max. up to 2,000rpm
Vacuum pump		Chemical resistant PTFE coated Diaphragm pump
ultimate pressure	mbar	2 mbar
gauge		Analogue vacuum gauge
Cold trap		-40℃ , 2 liter collector
Dimensions	mm	600(W) x 630(D) x 990(H)mm
Power	V/Hz	220V / 60Hz
Weight	kg	60kg