

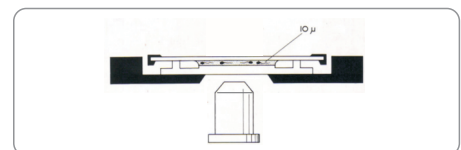
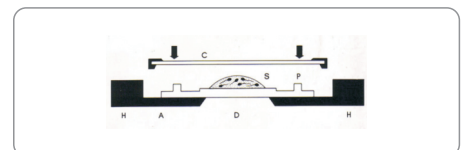
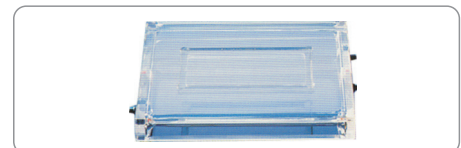
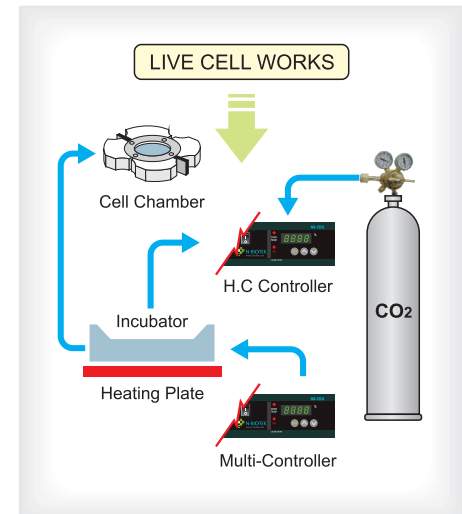
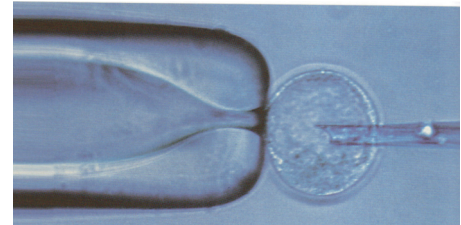
## LICES Live Cell Engineering Station

LICES is a special work station for live-cell experiment.

LICES is developed to provide the same environment with inside of incubator during the observation and experimentation by sustaining the required Humidity, Co2 and Temperature.



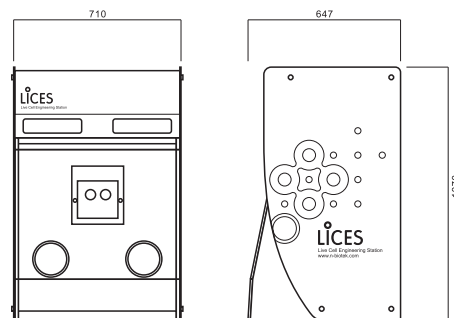
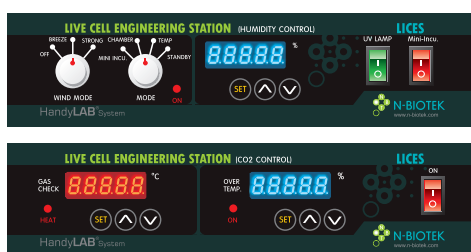
EASY - TO - USE,  
THE MOST VERSATILE  
FOR LIVE CELL WORKS



**LICES**  
Live Cell Engineering Station

## Features

- High success rate of experiment**  
 The technology to control the required temperature, humidity, Co2 density in clean room enhances the success rate of experiment.
- No stress on the cell**  
 The integrated system minimizes the external influence during the experiments related to Live-Cell.
- Easy to analyze**  
 Easy to analyze the cell cultivation.
- Easy to adopt Microscope**  
 Any kind of Microscope is adoptable to LICES



## Specification

Items	Unit	LICES (NB-801LCS)
<b>WORK STATION</b>		
<b>CO2</b>		IR Sensor 2 Channel
<b>CO2 Concentration Range</b>		0% to 10%
<b>CO2 Accuracy</b>		±0,1℃ at 5% at 37℃
<b>Humidity</b>		60% ~ 95%
<b>HEPA Filters</b>		99,99% Efficiency on Particles of 0,3μm
<b>Fluorescent Lamp</b>		30W x 1
<b>UV Lamp</b>		254mm Germicidal UV Light x 2
<b>Face Velocity</b>		3 Step Selection
<b>Air Flow</b>		Up to Down Flow
<b>Circulation</b>		Auto(time), Manual
<b>Working Zone</b>		
Interior		PC & SST & Powder Coating
Opening		Open
Work Area		690(W) x 630(D) x 800(H)mm
Dimensions		710(W) x 6470(D) x 1070(H)mm
<b>MULTI-CONTROLLER</b>		
<b>Temperature Controller</b>		
Range		Ambient +5℃ to 60℃
Accuracy		±0,1℃ at 37℃
Increment		0,1℃
Control		Microprocessor Digital PID
<b>WARM PLATE</b>		
<b>Heat Plate</b>		6 Sides heating
<b>Weight</b>		90kg